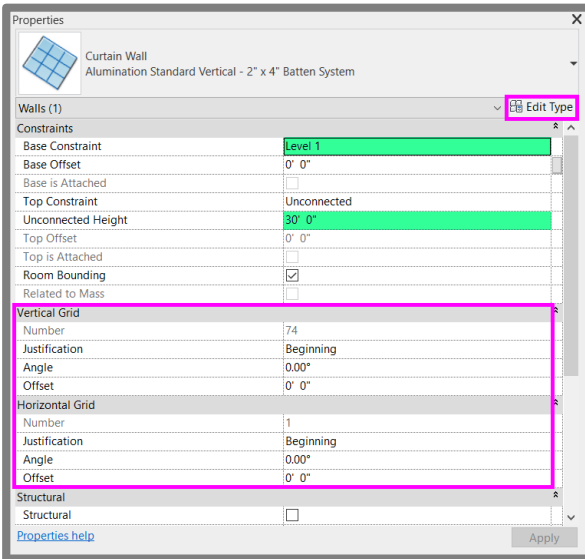


Quick Start Guide: Alumination Battens (v2023.1)

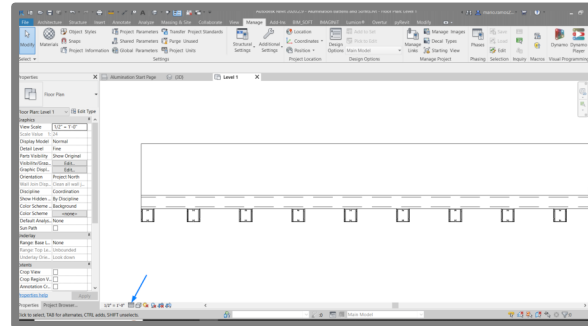
The Alumination Batten Revit Families are a “curtain wall” families with preloaded profiles and additional content. There are 18 standard wood-look finishes included in the Revit families. Below is an instructional guide to access them as well as access detail families included.

1. Batten Families



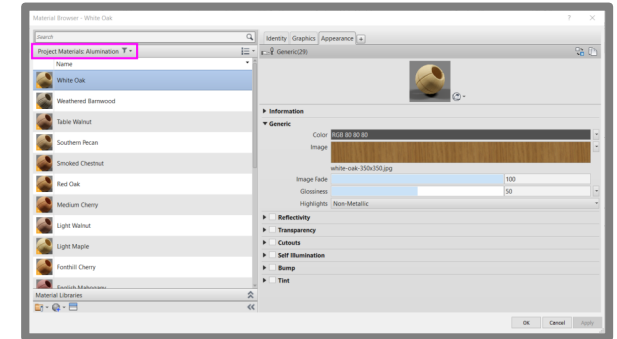
- The standard batten sizes are 2x2, 2x4, 2x6, and 2x8 (inches).
- The maximum extrusion length is 24 feet long.
- The batten types are all curtain wall families in Revit.
- There are two types preloaded into the Revit Project. Horizontal and Vertical.
- The standard spacing for each can be modified by pressing the edit type button in the properties dialog box.
- When using/placing the batten families for your project specific needs, be mindful of the base and top constraints. Revit recognizes these families as walls will bind them by wall rules.

2. Details



- The profiles families used to make the 3D batten extrusions have built-in detail families.
- When the “Detail Level” is set to “Fine” the detail families within the batten profiles will be visible.
- The detail families will not be visible in Coarse or Medium Detail Levels.

3. Materials



- For rendering purposes, all 18 wood-look standard finishes are pre-loaded into the Revit Families.
- To access them, go to the Manage Tab>Materials>Then in the Project Materials filter, press Alumination.
- You are now able to view all 18 wood-look finishes.
- Done!