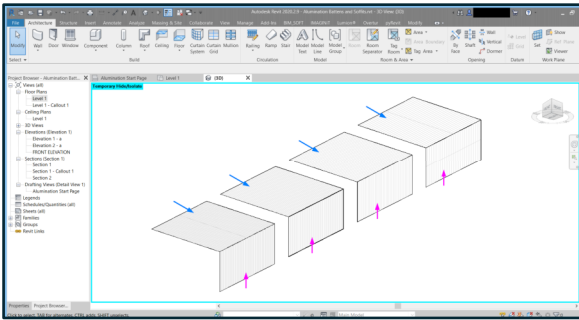


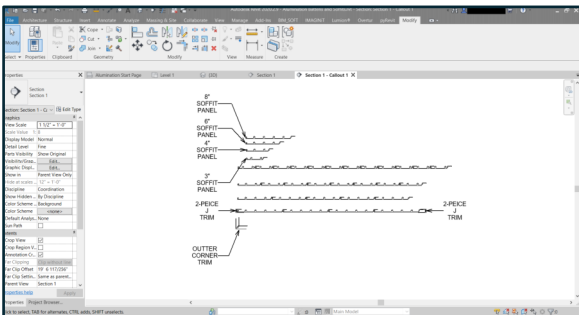
13 ePs Plank System Quick Start Guide

Included with the Alumination Soffit and Wall Planks families are detail components and repeating detail components for use with these products. The Soffit Planks are Revit Ceiling Families, and the Wall Planks are Revit Wall Families. Standard 3", 4", 6", and 8" wide planks by 24 feet length.



1. MODEL CONTENT

- The Soffit Planks are ceiling families with model fill patterns.
- The Wall Planks are wall families with model fill patterns.
- The fill patterns can be aligned however a user desires.
- Revit ceiling families and wall families can be used for both interior and exterior purposes.
- Both soffit and wall planks require a trim piece on the edge.
- To achieve this, user may use the split face command in Revit to draw/model the edge trim in elevations.



2. DETAIL & REPEATING DETAIL COMPONENTS

- Also provided are detail components with preloaded type comments information and detail component tags for consistent naming and tagging.
- Detail Components Provided:
 - 8" Plank Section Detail
 - 6" Plank Section Detail
 - 4" Plank Section Detail
 - 2" Plank Section Detail
 - 2 - Piece J Trim Section Detail
 - Outer Corner Trim Section Detail
- Repeating Details Provided:
 - 8" Plank Section Detail
 - 6" Plank Section Detail
 - 4" Plank Section Detail
 - 2" Plank Section Detail



3. ORGANIZATION & ALIGNMENT

- Have your own pattern ideas?
- Consult with Alumination to see what's possible.
- Done!