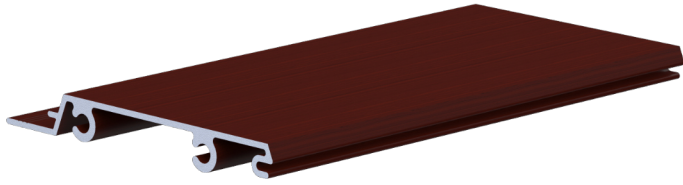


# Installation Guide

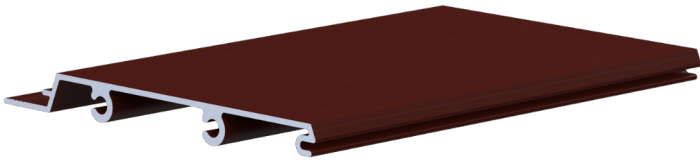
Please review all instructions prior to installation.



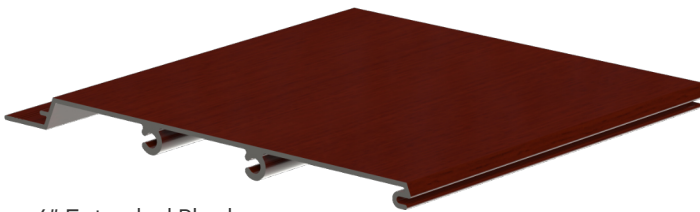
# Plank Components



3" Extruded Plank



4" Extruded Plank



6" Extruded Plank



8" Extruded Plank

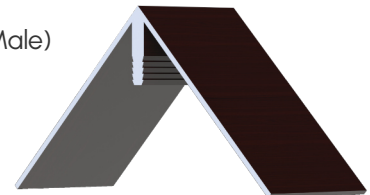


J-Trim (Male)

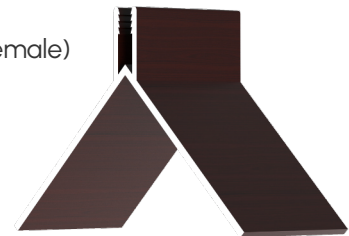


J-Trim (Female)

Corner Trim (Male)



Corner Trim (Female)



## Tools List

Saw  
Mallet  
Screw Gun

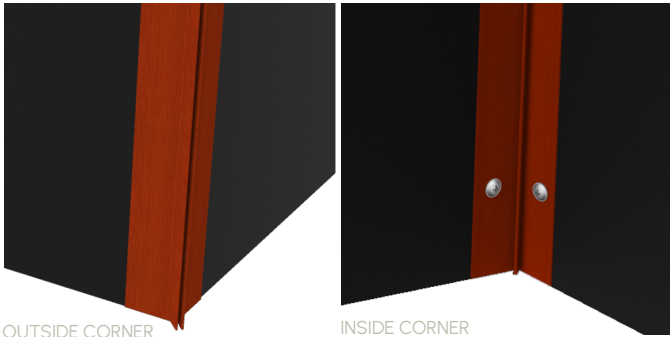
Rivet Gun (Optional)  
#10 Phillips Screws Appropriate for Wall Type

Optional End Caps: Blind Pop Rivets or #10 Phillips Countersunk Screws  
Fastener Packages Available Upon Request

# Installation Steps

## IMPORTANT NOTES

Carefully unwrap the materials and handle with care.



## 1. INSTALL CORNER TRIM

Attach corner trim to inside or outside 90° corners.

90° outside corner - fasten the female j-trim first.

90° inside corner - fasten the male j-trim first.

Do not attach corner trim cap until after panels are installed.

*If there is no corner trim on the project, move to step 2.*



## 2. INSTALL J-TRIM BASE

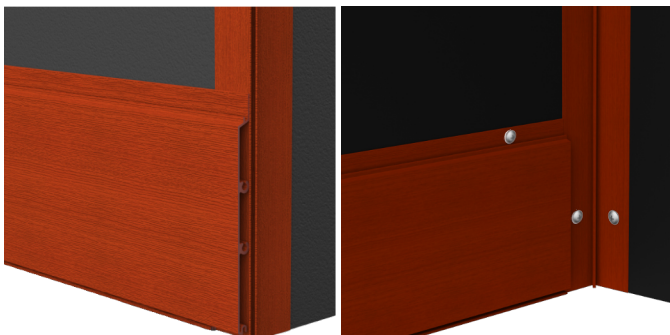
Measure and cut base j-trim pieces to fit the perimeter area.

For a base that is longer than the j-trim lengths, butt the joints together to fit the desired length.

Use a 1/8" shim spacer when installing the first row of plank to ensure that the female j-trim will attach properly.

Attach each trim piece with screws spaced every 30".

Install all base j-trim before starting plank.



## 3. INSTALL FIRST PLANK

Install the first plank horizontally or vertically, leaving a minimum 1/8" gap between the base j-trim.





#### 4. LEVEL & PLUMB

Check to ensure that the plank is level and plumb.

Fasten in the #10 Phillips screws appropriate for the specific wall type every 30" on the flat lip of the plank.

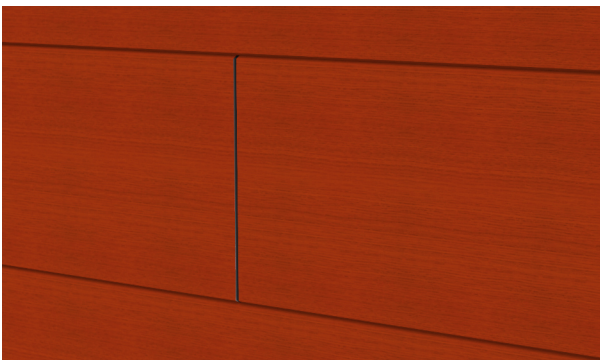


#### 5. CONTINUING PLANK

Once the first level of plank has been installed across the entire length, continue installing the horizontal or vertical planks.

The short curved end slips in and clips into the long flat end of the prior plank.

Make sure each plank is plumb and level, then tighten the fasteners (spaced 30" apart.)



#### 6. VARY BUTT JOINT LOCATIONS

When starting the second row of plank, cut the plank to a different length so that the butt joint occurs at a different location from the first plank, creating a staggered pattern.



#### 7. HORIZONTAL PLANKS

If the plank is not long enough to fit the width of the space, butt joint the planks together, staggering as necessary.

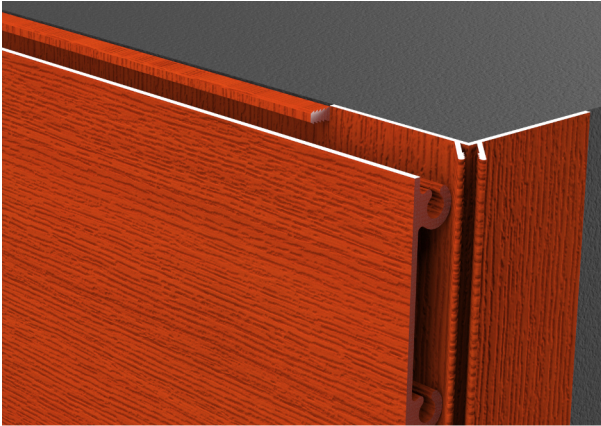
*\*If using end caps, reference page seven.*



## 7. VERTICAL PLANKS

If the plank is not tall enough to fit the height of the space, butt joint the planks together.

*\*If using end caps, reference page seven.*



## 8. FINAL PLANK

Once a plank reaches to the trim opposite of where the first plank was installed, measure how much overlap occurs if the side of the plank does not meet up to the trim base.

Use a saw to rip the final plank to the appropriate width. Then, clip the final panel into the prior panel and fasten the sheared edge (every 30").

The ripped / final flat edge lays on top of the flat base of the trim.



## 9. CORNER TRIM COVERS

Clip on the corner trim covers (if using).

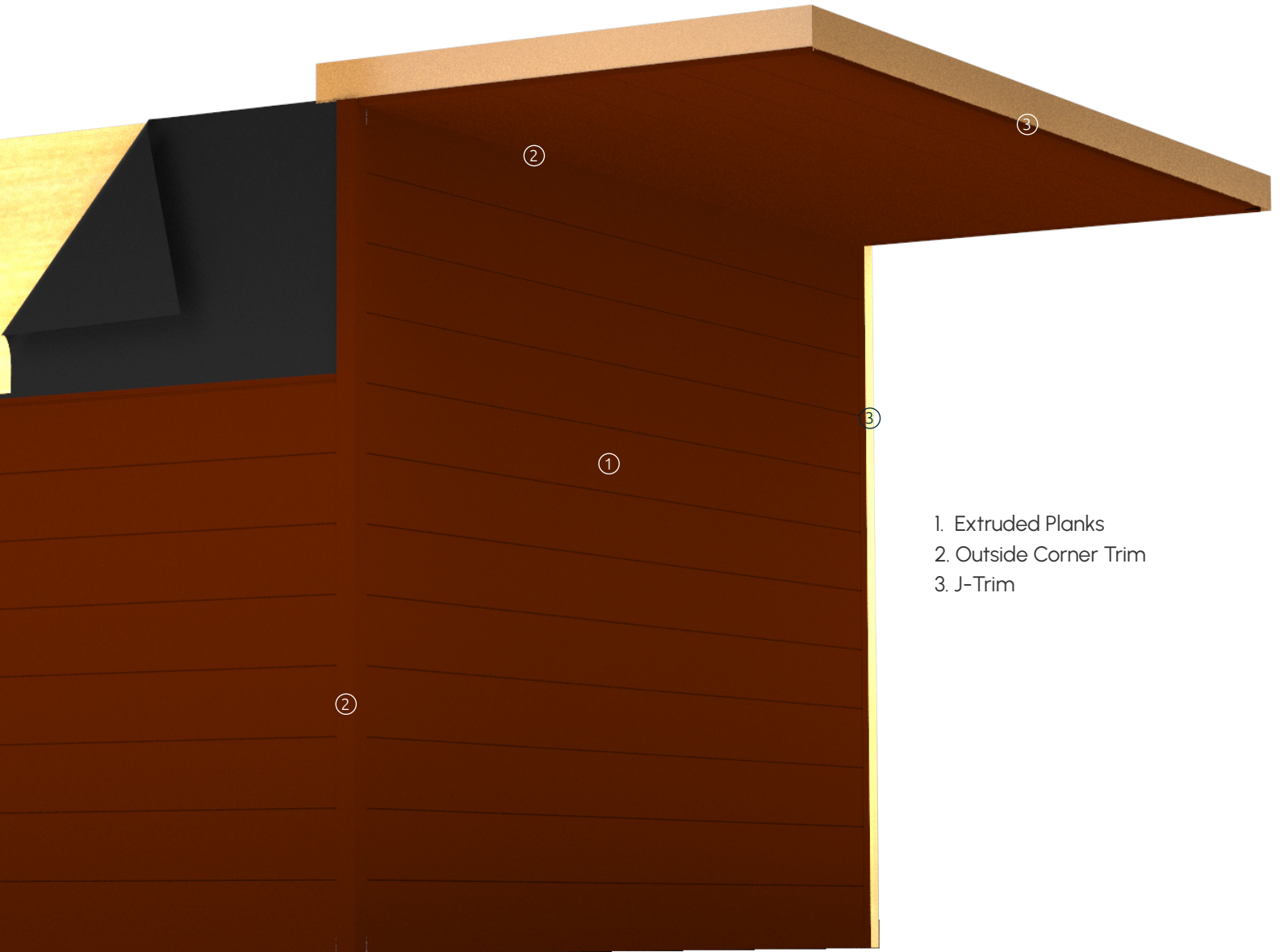
90° outside corner - clip the male j-trim into the female j-trim.

90° inside corner - clip the female j-trim into the male j-trim.



## 10. J-TRIM COVERS

Once all planks have been installed, clip on the trim covers. Use the female j-trim and press to snap into the male j-trim.



## Cleaning & Care

### CLEANING RECOMMENDATIONS

Alumination Architectural Products do not require any maintenance to preserve the powder coat finish; however, regular cleaning is recommended to ensure optimal longevity. For more instructions on cleaning and care, go to [alumination-ap.com/downloads/alumination-cleaning-care-instructions.pdf](https://www.alumination-ap.com/downloads/alumination-cleaning-care-instructions.pdf)

# Optional End Caps

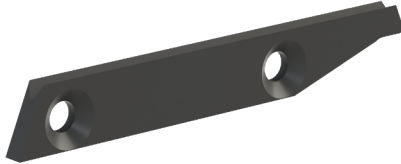


## END CAP JOINT

Install the end cap to the plank prior to the plank unit being installed onto the wall. Each end cap separates two planks.

Arrange the end cap so that the holes line up with the embosses of the plank. The fasteners are to be attached on the side of the end cap that has the countersunk holes.

3" End Cap



6" End Cap



4" End Cap



8" End Cap



13

13  
**Al**UMINATION  
ARCHITECTURAL PRODUCTS

INNOVATIVE DESIGN. CONTRACTOR APPROVED. **POWERED BY ARCH-FAB.**

**817.678.4440**

info@aluminumation-ap.com  
2108 E. Richmond Fort Worth, TX 76104